

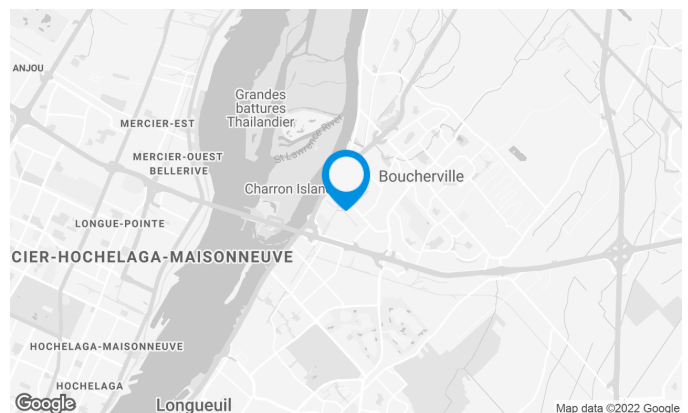
Industrial building with office spaces on the 2nd floor. In the heart of Boucherville Industrial Park, this property offers easy access to all major highways.

Building characteristics

BUILDING AREA	16,297 ft ²
LAND AREA	35,714 ft ²
YEAR OF CONSTRUCTION	1987
NUMBER OF FLOORS	2
SPRINKLERS	Yes

BUILDING ACCESSIBILITY

PARKING - OUTDOOR	17
ROAD ACCESS	Road 132 and Highway 20
BUS	T89, 84



Stéphane Robidas

LEASING DIRECTOR
LEASING - INDUSTRIAL, MONTREAL AREA

T 514 737-3344 #3373

C 514 605-5152

E STEPHANE.ROBIDAS@COMINAR.COM

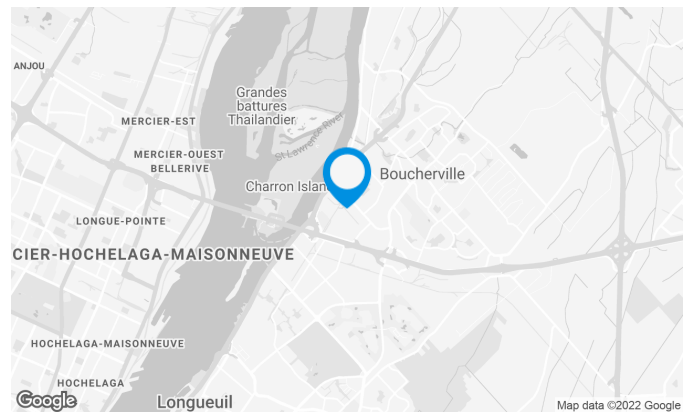
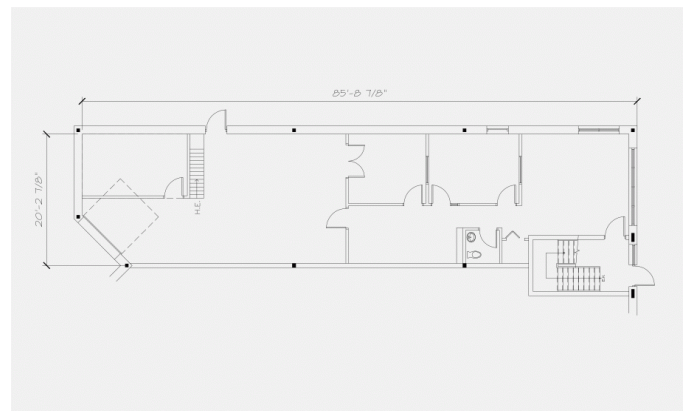
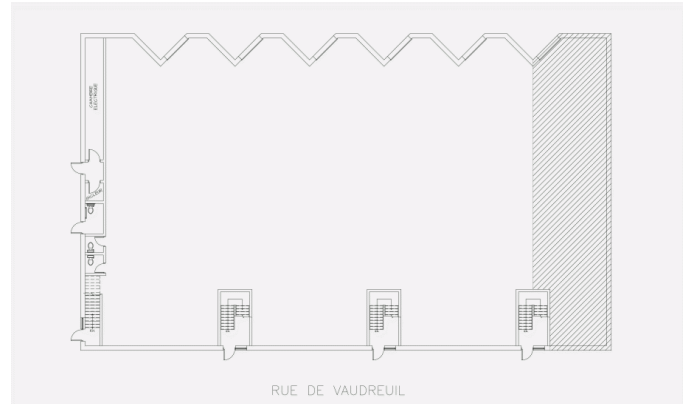
Industrial building with office spaces on the 2nd floor. In the heart of Boucherville Industrial Park, this property offers easy access to all major highways.

Space characteristics

NUMBER OF FLOORS	1
HEIGHT	22'
SHIPPING	1 truck level
ADDITIONAL RENT	\$5.34 /ft ²
ELECTRICITY	600 V, 100 A
SPACE BETWEEN THE COLUMNS	20' x 28'
HEATING	Electricity/gas

AVAILABLE LEASING AREA: 1,721 FT²

WAREHOUSE	1,000 ft ²
OFFICES	721 ft ²



Stéphane Robidas

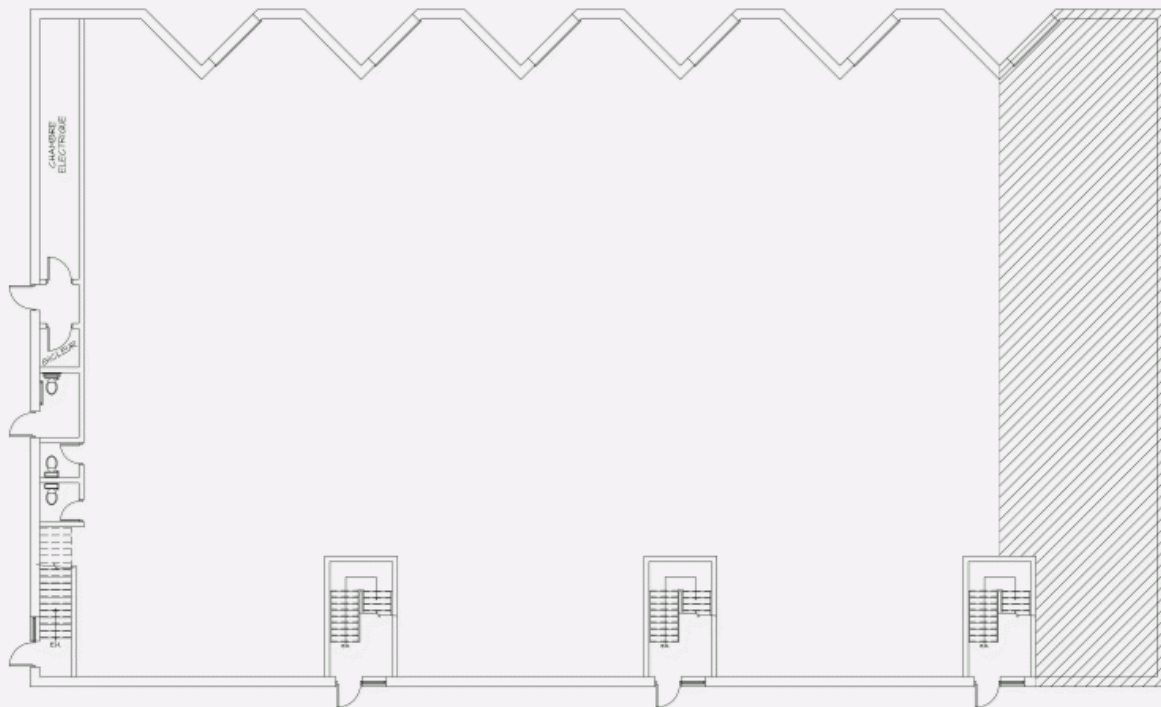
LEASING DIRECTOR
LEASING - INDUSTRIAL, MONTREAL AREA

T 514 737-3344 #3373

C 514 605-5152

E STEPHANE.ROBIDAS@COMINAR.COM

LOCATION PLAN



RUE DE VAUDREUIL

LAYOUT PLAN

