

2600 Saint-Jean-Baptiste Avenue, Quebec, QC, G2E 6J5 Suite #165

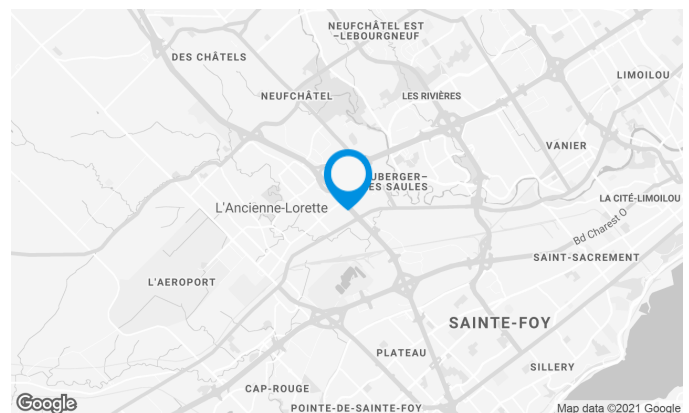
Located at the intersection of autoroute Henri-IV and the Hamel boulevard.

Building characteristics

LAND AREA	116,838 ft ²
YEAR OF CONSTRUCTION	2005
NUMBER OF FLOORS	1
SPRINKLERS	Yes

BUILDING ACCESSIBILITY

PARKING - OUTDOOR	77
ROAD ACCESS	Located near of Henri IV highway and Wilfrid-Hamel boulevard, neighbor of Techno Park of Quebec.
BUS	380



Location Cominar



T 418 681-6300 #2411
E LOCATIONQUEBEC@COMINAR.COM

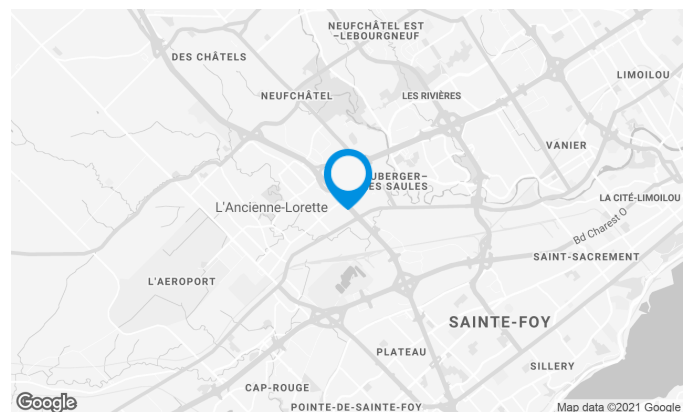
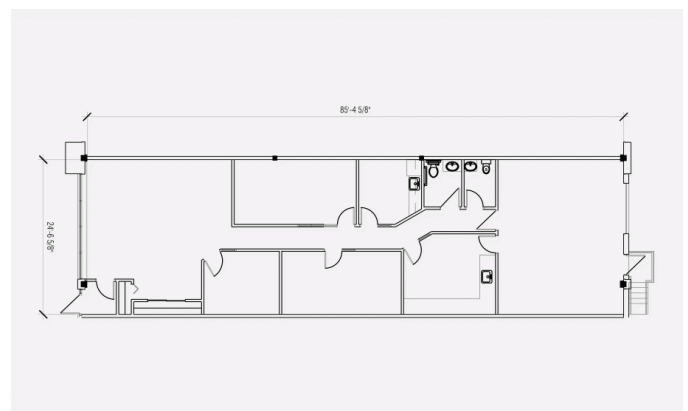
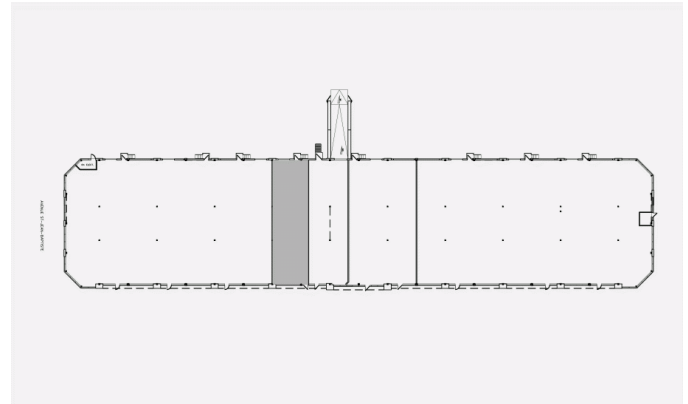
Large free outdoor parking.

Space characteristics

NUMBER OF FLOORS	1
HEIGHT	0'
SHIPPING	1 truck level

AVAILABLE LEASING AREA: 2,190 FT²

OFFICES	2,190 ft ²
---------	-----------------------

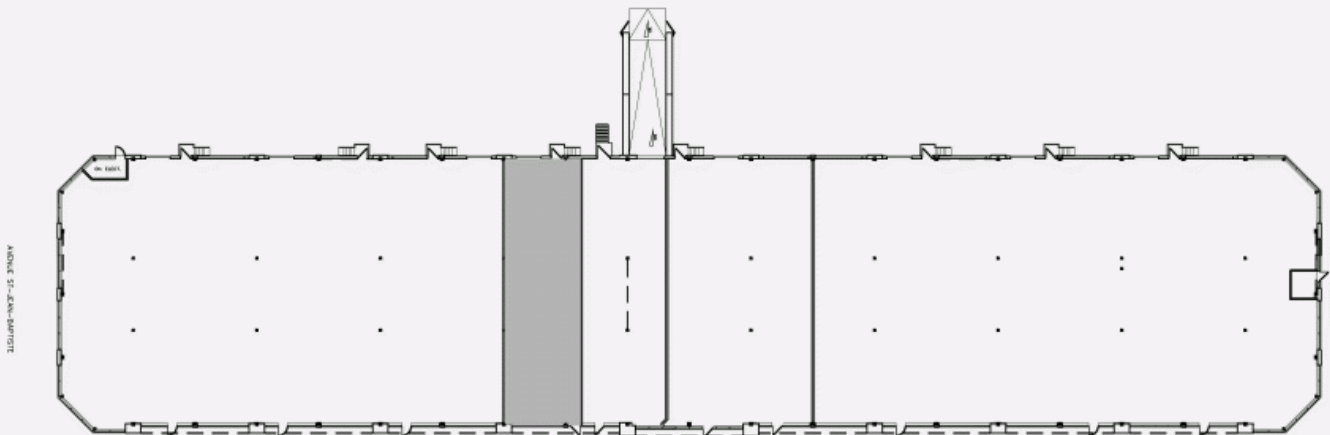


Location Cominar

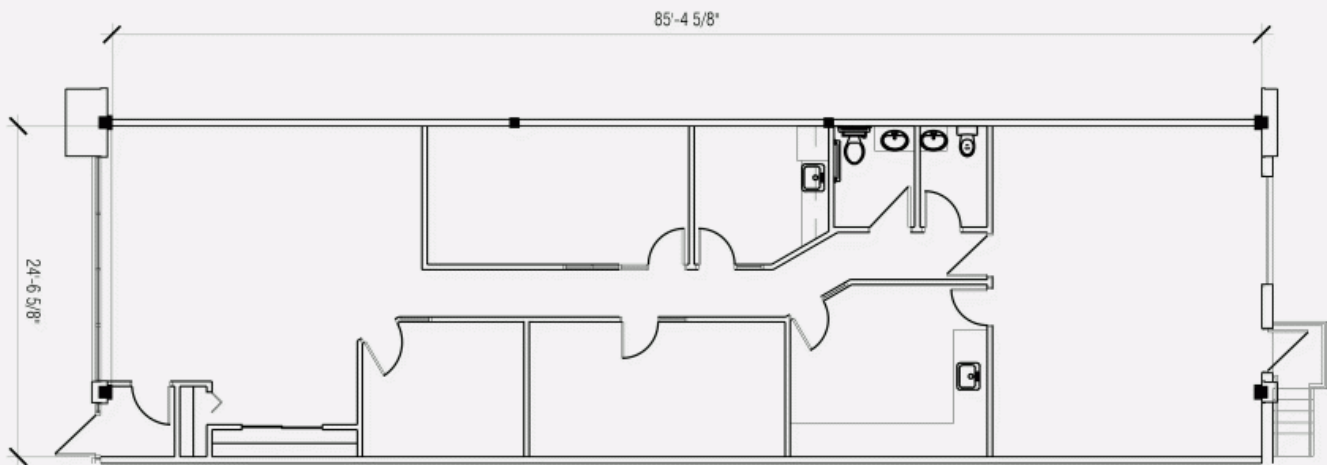


T 418 681-6300 #2411
E LOCATIONQUEBEC@COMINAR.COM

LOCATION PLAN



DEVELOPMENT PLAN



2600 Saint-Jean-Baptiste Avenue, Quebec, QC, G2E 6J5
Suite #165



Building image

