

1550 Coulomb Street, Boucherville, QC, J4B 7Z7

Suite #A

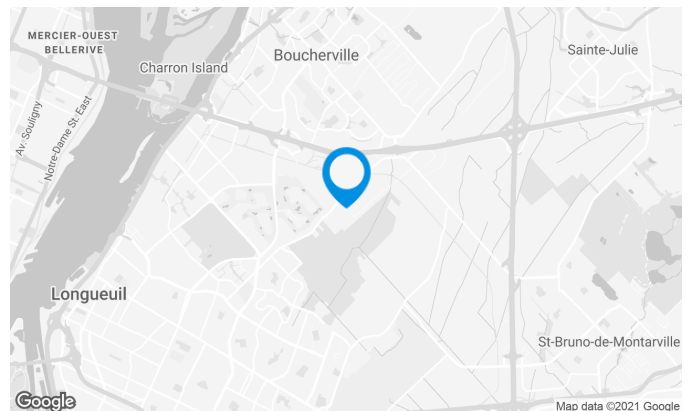
Located near highways 20, 25 and 30.

Building characteristics

BUILDING AREA	10,345 ft ²
LAND AREA	29,855 ft ²
AVAILABILITY	July 2022
YEAR OF CONSTRUCTION	1994
NUMBER OF FLOORS	1
SPRINKLERS	Yes

BUILDING ACCESSIBILITY

PARKING - OUTDOOR	24
-------------------	----



Stéphane Robidas

LEASING DIRECTOR
LEASING - INDUSTRIAL, MONTREAL AREA

T 514 737-3344 #3373

C 514 605-5152

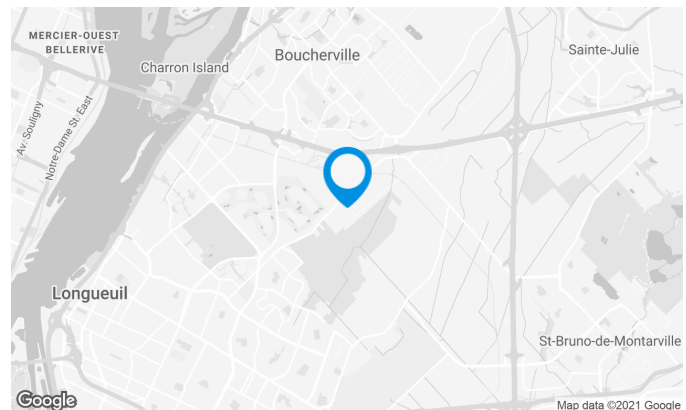
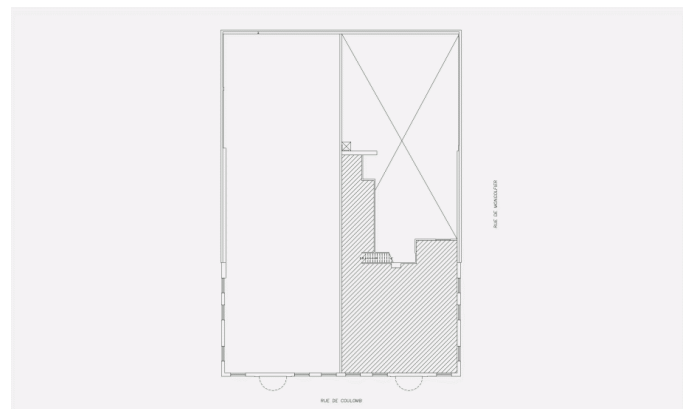
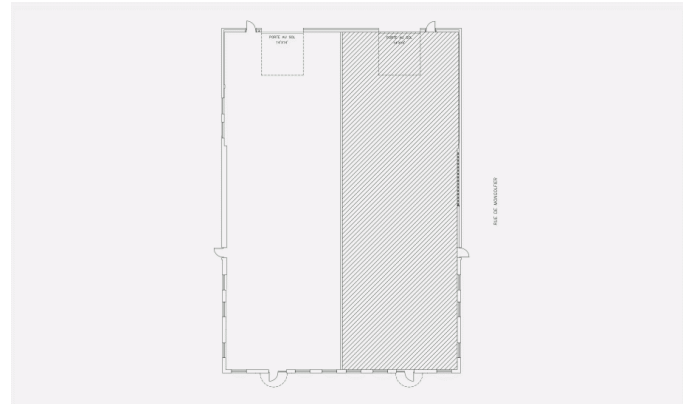
E STEPHANE.ROBIDAS@COMINAR.COM

Space characteristics

NUMBER OF FLOORS	1
HEIGHT	20'
SHIPPING	1 drive-in
ADDITIONAL RENT	\$7.37 /ft ²

AVAILABLE LEASING AREA: 6,434 FT²

WAREHOUSE	2,686 ft ²
OFFICES	3,748 ft ²
AVAILABILITY	July 2022

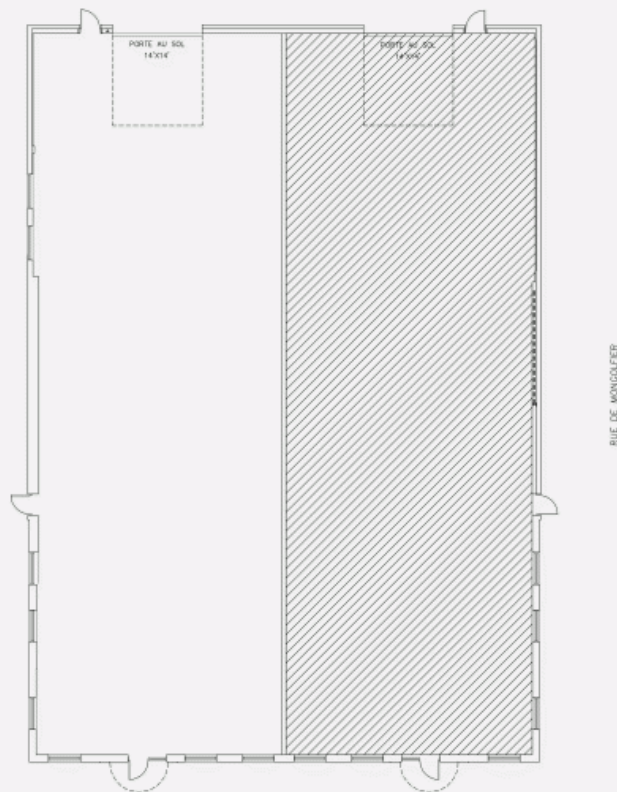


Stéphane Robidas

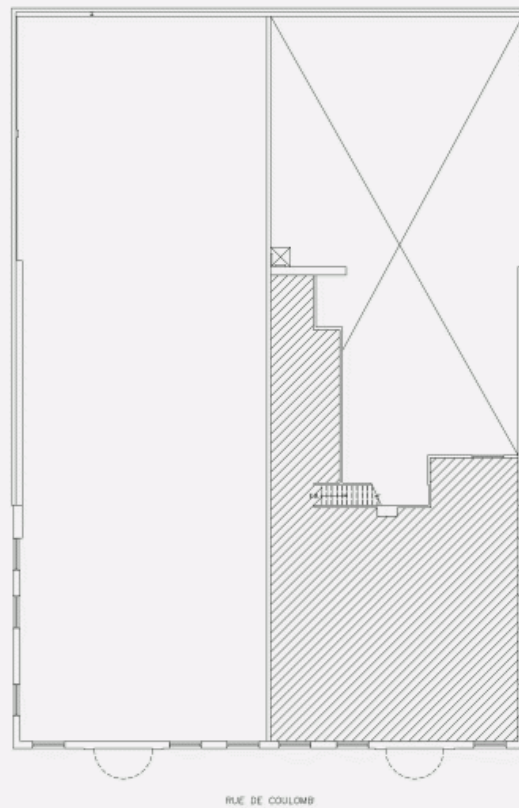
LEASING DIRECTOR
LEASING - INDUSTRIAL, MONTREAL AREA

T 514 737-3344 #3373
C 514 605-5152
E STEPHANE.ROBIDAS@COMINAR.COM

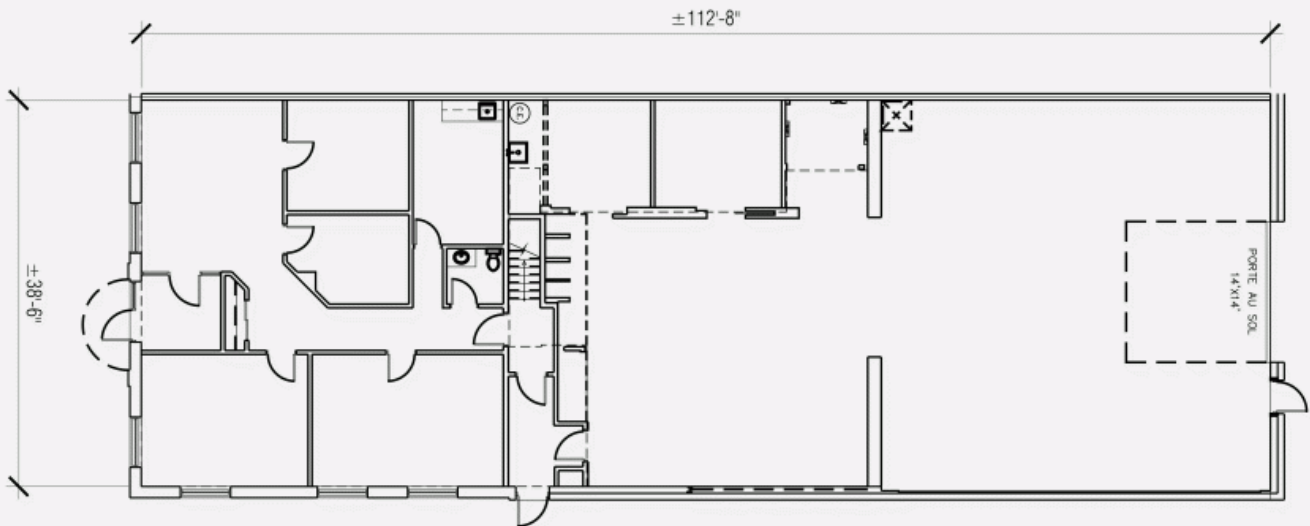
LOCATION PLAN



LOCATION PLAN - MEZZANINE



LAYOUT PLAN



LAYOUT PLAN - MEZZANINE

