

25 de Lauzon Street, Boucherville, QC, J4B 1E7

Suite #1

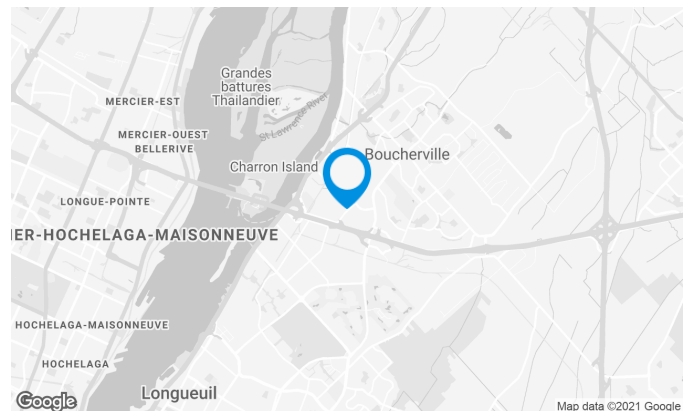
In the heart of Boucherville Industrial Park, this property offers easy access to all major highways.

Building characteristics

LAND AREA	118,628 ft ²
AVAILABILITY	Immediate
YEAR OF CONSTRUCTION	1989
NUMBER OF FLOORS	1
SPRINKLERS	Yes

BUILDING ACCESSIBILITY

PARKING - OUTDOOR	140
-------------------	-----



Stéphane Robidas

LEASING DIRECTOR
LEASING - INDUSTRIAL, MONTREAL AREA

T 514 737-3344 #3373

C 514 605-5152

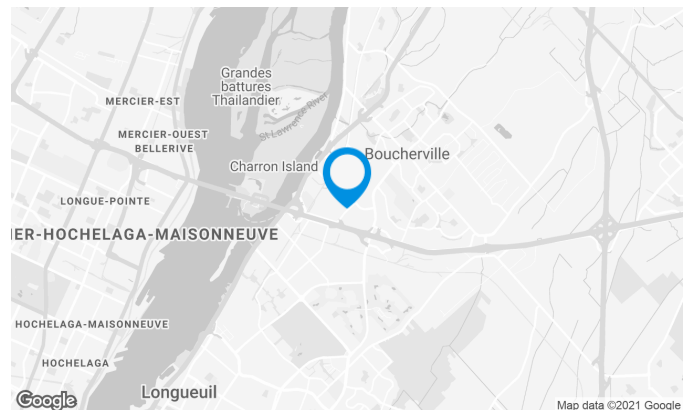
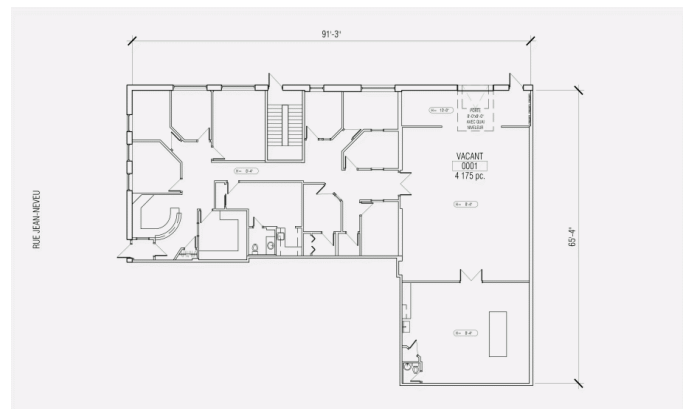
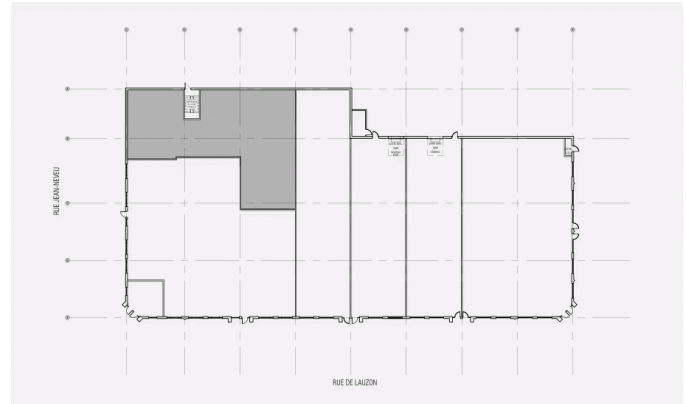
E STEPHANE.ROBIDAS@COMINAR.COM

Space characteristics

NUMBER OF FLOORS	2
HEIGHT	10'
SHIPPING	1 truck level
ADDITIONAL RENT	\$4.91 /ft ²
HEATING	Electricity
COMMENTS	Warehouse with technical laboratory space

AVAILABLE LEASING AREA: 4,175 FT²

WAREHOUSE	2,000 ft ²
OFFICES	2,175 ft ²
AVAILABILITY	Immediate



Stéphane Robidas

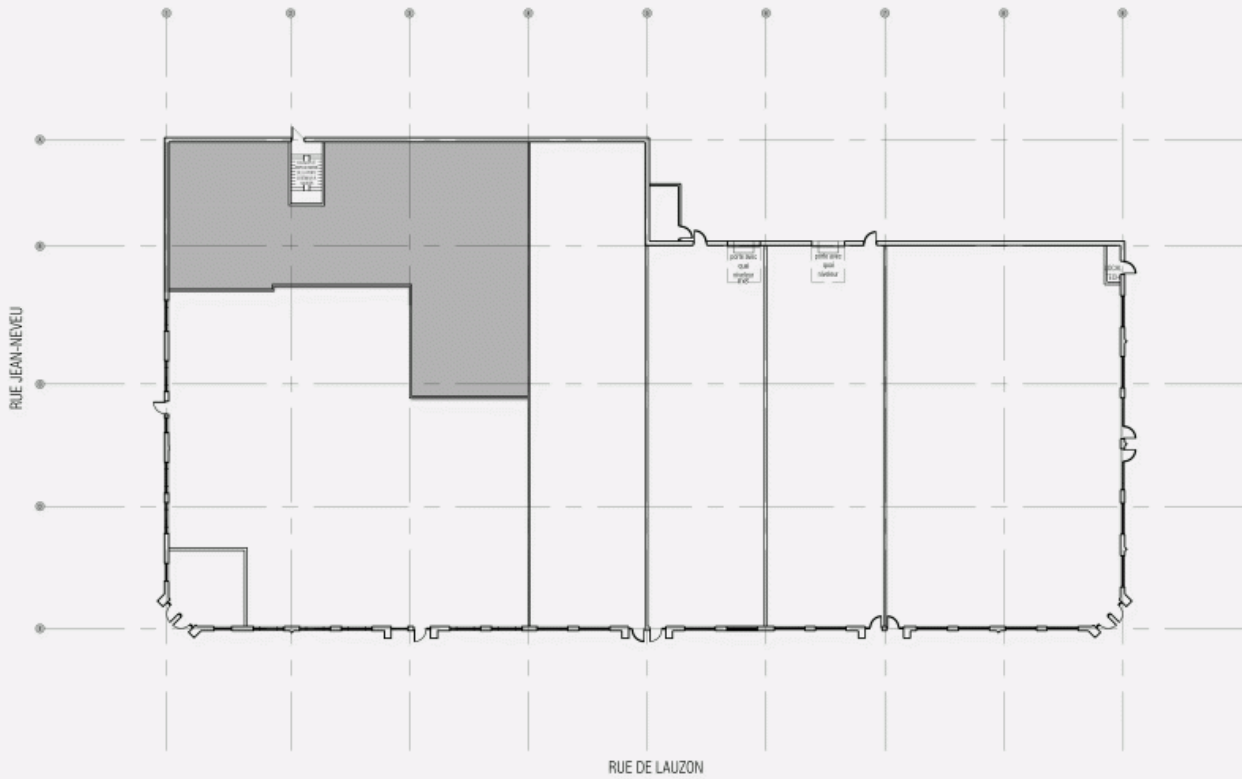
LEASING DIRECTOR
LEASING - INDUSTRIAL, MONTREAL AREA

T 514 737-3344 #3373

C 514 605-5152

E STEPHANE.ROBIDAS@COMINAR.COM

LOCATION PLAN



LAYOUT PLAN

