

30-56 Jacques-Nau Street, Lévis, QC, G6V 9J4 Suite #32

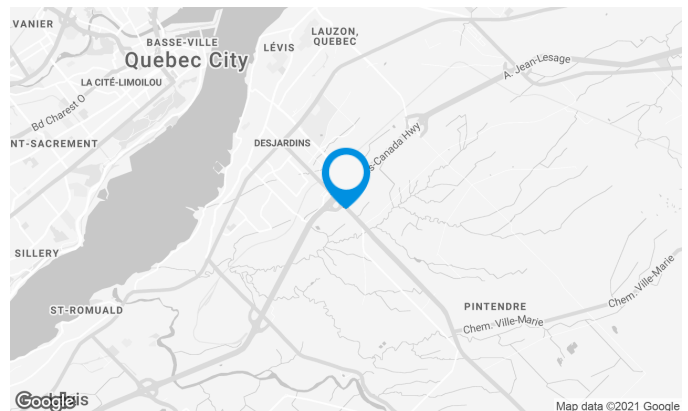
Building characteristics

LAND AREA	225,779 ft ²
AVAILABILITY	March 2022
NUMBER OF FLOORS	1
SPRINKLERS	Yes
SECURITY	Outdoor parking



BUILDING ACCESSIBILITY

ROAD ACCESS	Located on Jacques-Nau Street, near Highway 20.
BUS	15,916



Location Cominar



T 418 681-6300 #2411
E LOCATIONQUEBEC@COMINAR.COM

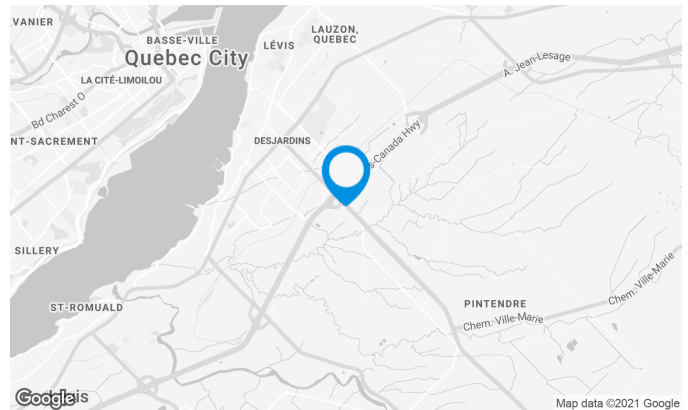
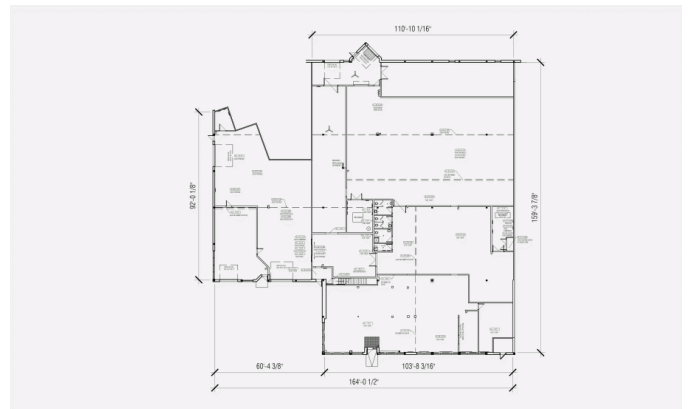
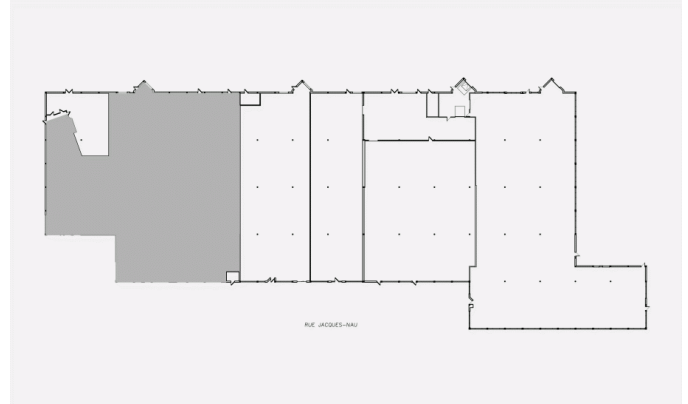
30-56 Jacques-Nau Street, Lévis, QC, G6V 9J4
Suite #32

Space characteristics

NUMBER OF FLOORS	1
HEIGHT	18'10"
SHIPPING	1 truck level 4 drive-ins

AVAILABLE LEASING AREA: 23,754 FT²

OFFICES	23,754 ft²
AVAILABILITY	March 2022

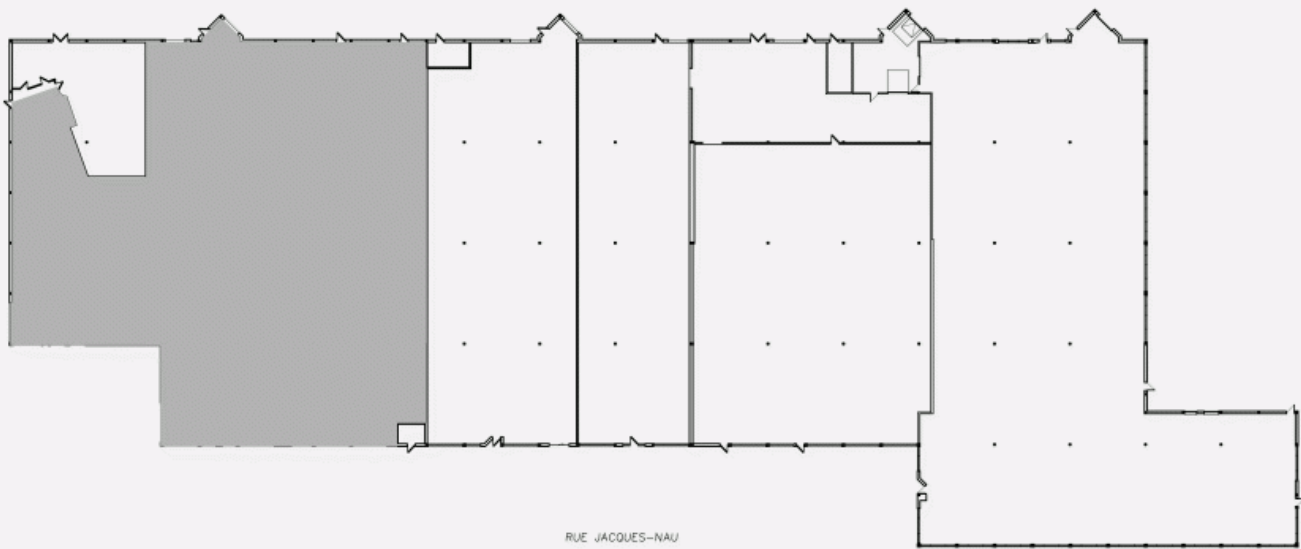


Location Cominar

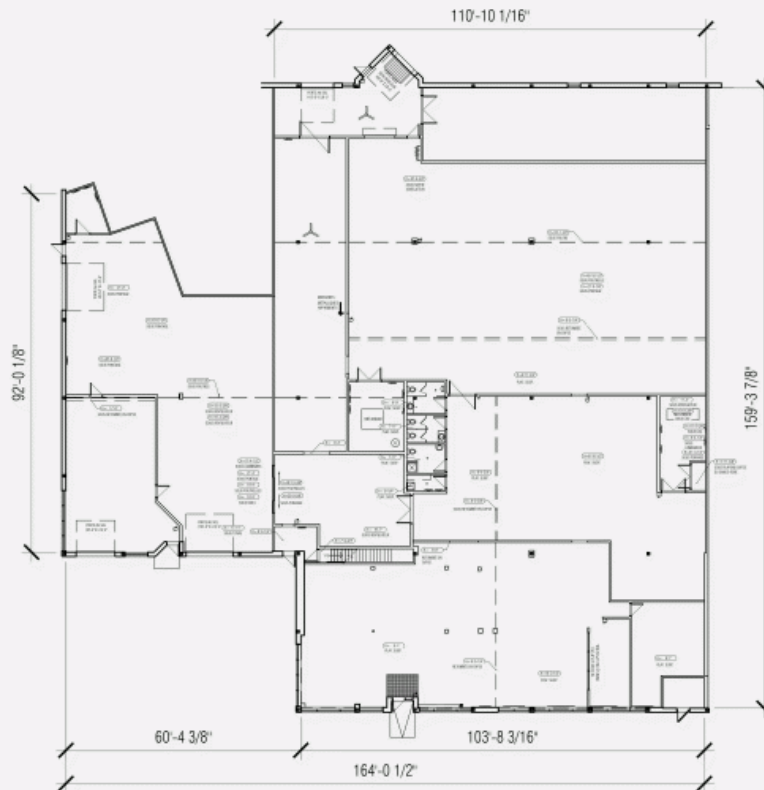


T 418 681-6300 #2411
 E LOCATIONQUEBEC@COMINAR.COM

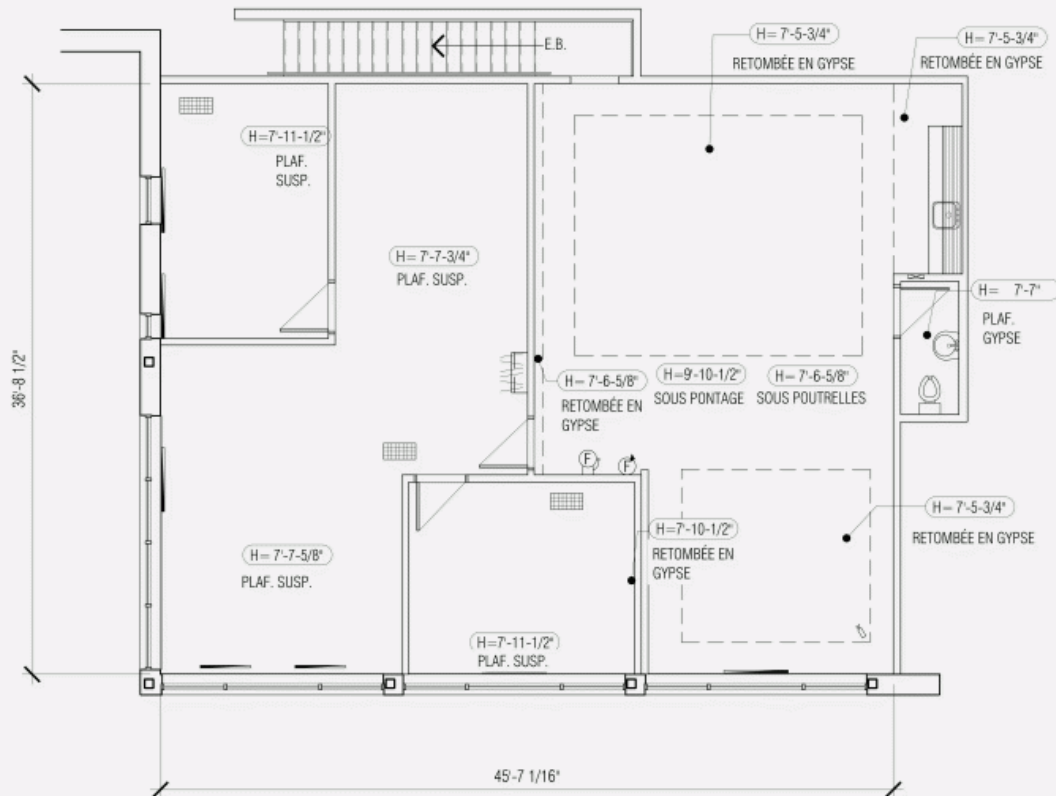
LOCATION PLAN



LAYOUT PLAN



MEZZANINE PLAN



30-56 Jacques-Nau Street, Lévis, QC, G6V 9J4
Suite #32



Building image

