

1990 Cyrille-Duquet Street, Quebec, QC, G1N 4K8

Suite #134

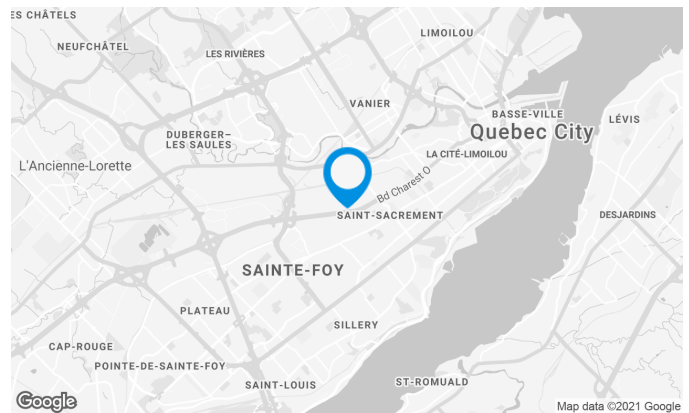
Located at the intersection of Highway Robert-Bourassa and Charest, in a commercial area.

Building characteristics

| | |
|------------------|-------------------------|
| LAND AREA | 184,177 ft ² |
| NUMBER OF FLOORS | 2 |
| SPRINKLERS | Yes |
| SECURITY | Fire alarm system |

BUILDING ACCESSIBILITY

| | |
|-------------------|--|
| PARKING - OUTDOOR | 164 |
| ROAD ACCESS | Highway Charest and Saint-Sacrement avenue |
| BUS | 9 |



Location Cominar



T 418 681-6300 #2411
E LOCATIONQUEBEC@COMINAR.COM

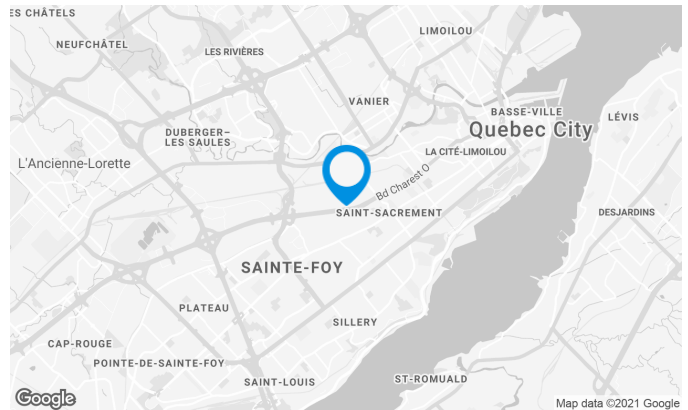
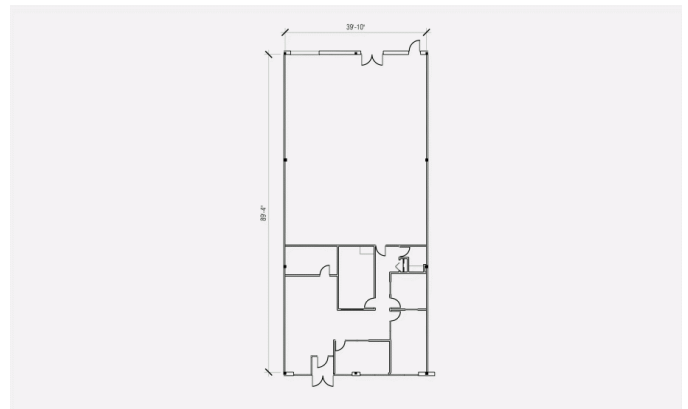
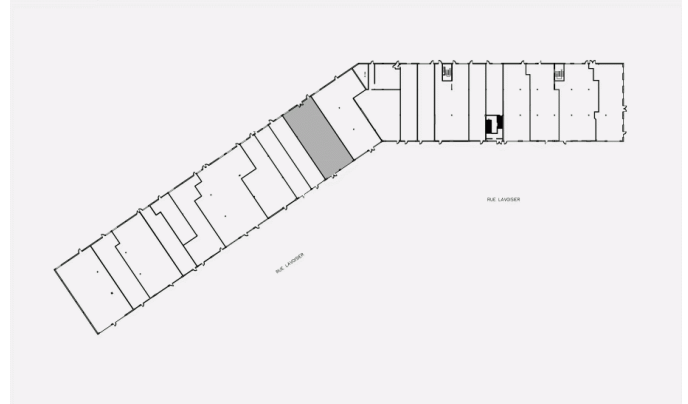
The space is adjacent to room 128 for a possible area of 7 895 square feet.

Space characteristics

| | |
|------------------|---------------|
| NUMBER OF FLOORS | 1 |
| HEIGHT | 0' |
| SHIPPING | 1 truck level |

AVAILABLE LEASING AREA: 3,695 FT²

| | |
|---------|-----------------------|
| OFFICES | 3,695 ft ² |
|---------|-----------------------|

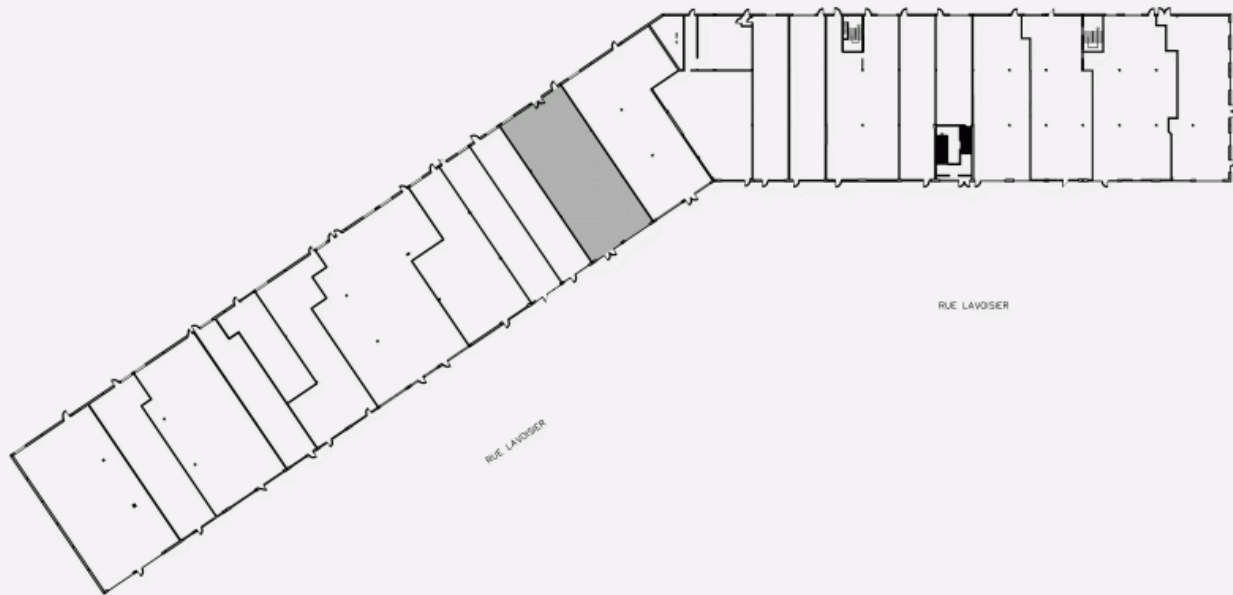


Location Cominar

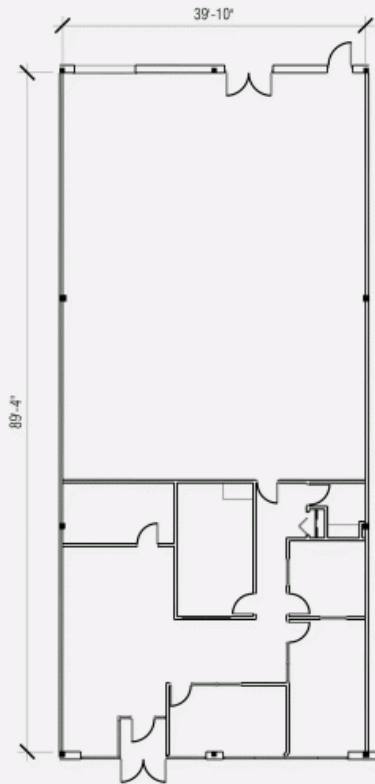


T 418 681-6300 #2411
E LOCATIONQUEBEC@COMINAR.COM

LOCATION PLAN



DEVELOPMENT PLAN





Building image

