

# 1990 Cyrille-Duquet Street, Quebec, QC, G1N 4K8

## Suite #115

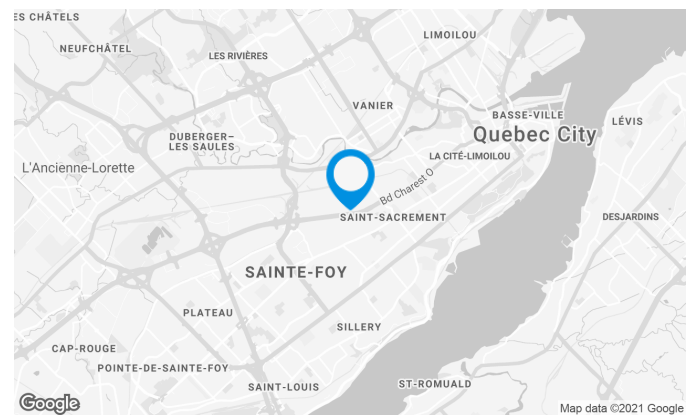
Located at the intersection of Highway Robert-Bourassa and Charest, in a commercial area.

### Building characteristics

LAND AREA	184,177 ft <sup>2</sup>
AVAILABILITY	Immediate
NUMBER OF FLOORS	2
SPRINKLERS	Yes
SECURITY	Fire alarm system

### BUILDING ACCESSIBILITY

PARKING - OUTDOOR	164
ROAD ACCESS	Highway Charest and Saint-Sacrement avenue
BUS	9



### Location Cominar



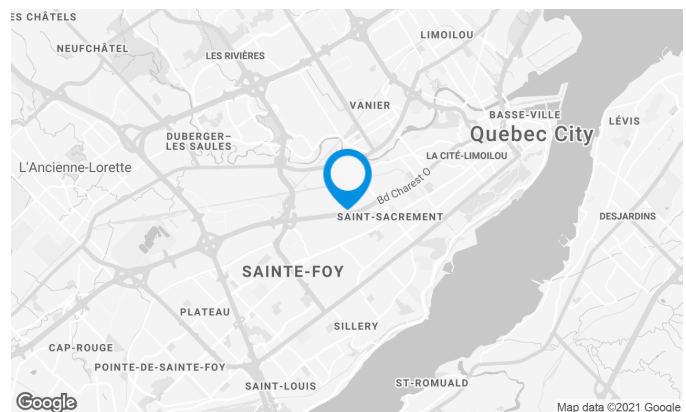
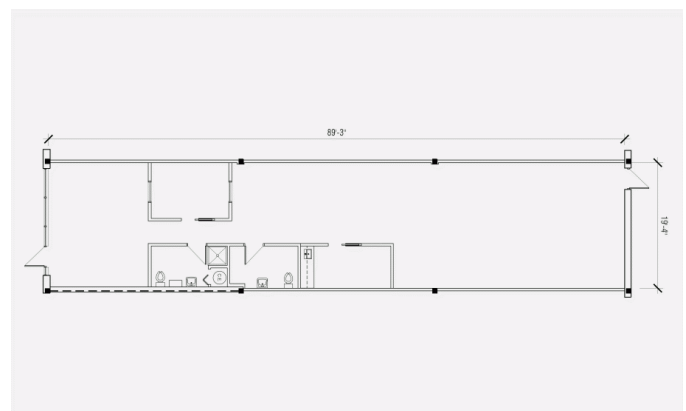
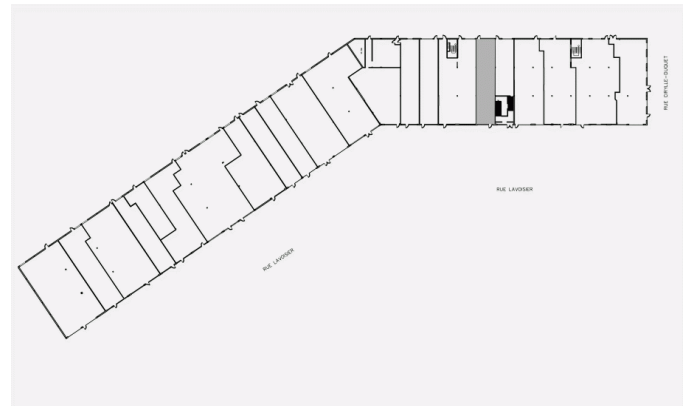
T 418 681-6300 #2411  
E LOCATIONQUEBEC@COMINAR.COM

## Space characteristics

NUMBER OF FLOORS	1
HEIGHT	14'
HEATING	Electricity

### AVAILABLE LEASING AREA: 1,805 FT²

OFFICES	1,805 ft²
AVAILABILITY	Immediate

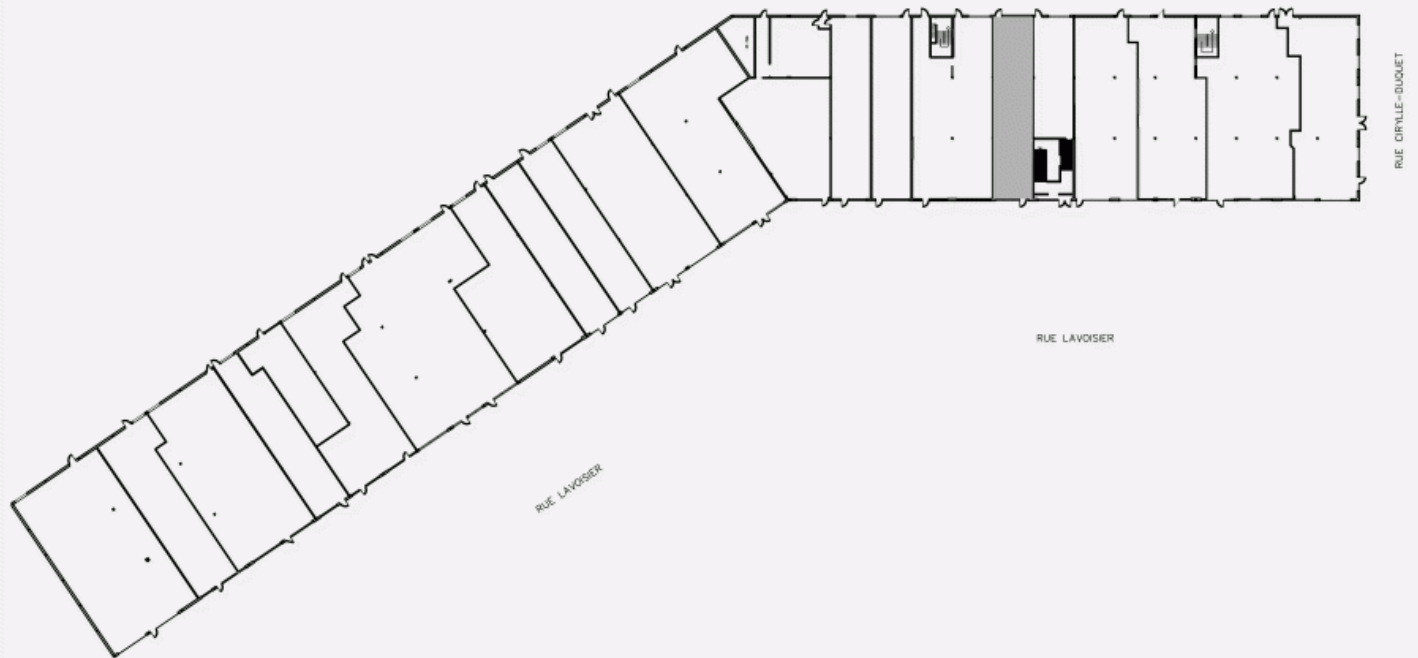


## Location Cominar

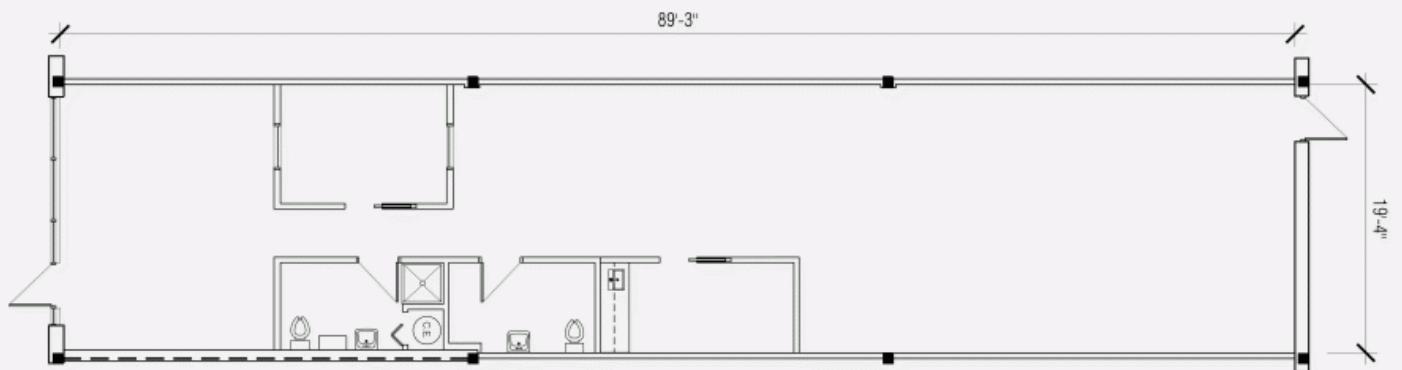


T 418 681-6300 #2411  
E LOCATIONQUEBEC@COMINAR.COM

LOCATION PLAN



LAYOUT PLAN





Building image

