

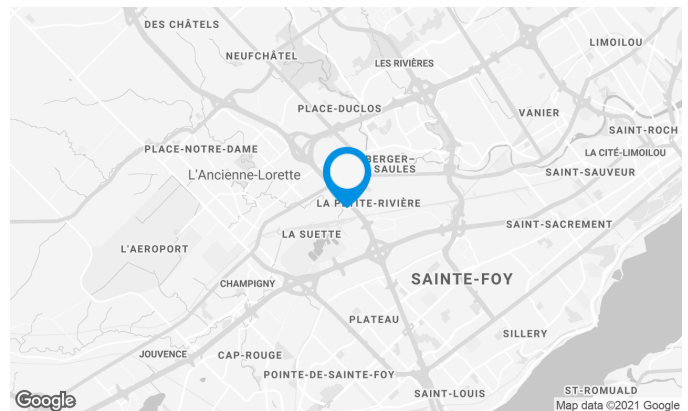
**450-500 Saint-Jean-Baptiste Avenue, Quebec, QC, G2E
5R9
Suite #80C**

Building characteristics

LAND AREA	151,960 ft ²
YEAR OF CONSTRUCTION	1984
NUMBER OF FLOORS	2
SPRINKLERS	Yes

BUILDING ACCESSIBILITY

PARKING - OUTDOOR	340
ROAD ACCESS	Located at the intersection of the Henri IV highway and the Wilfrid-Hamel boulevard.
BUS	88



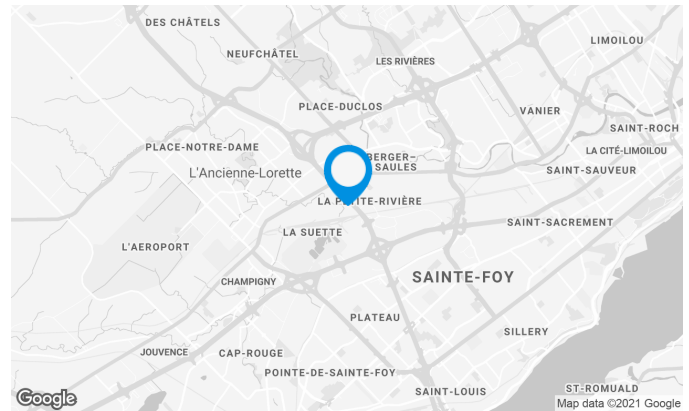
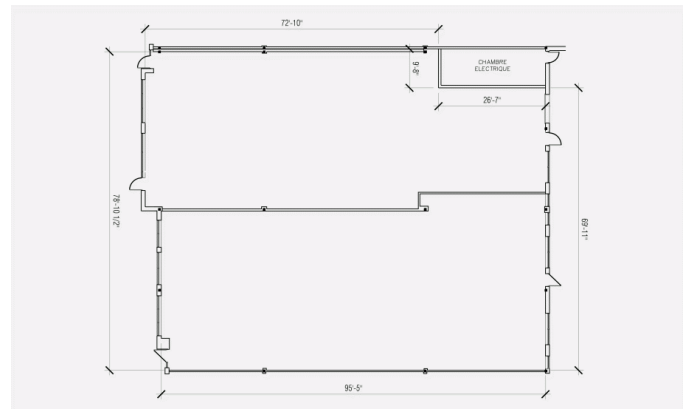
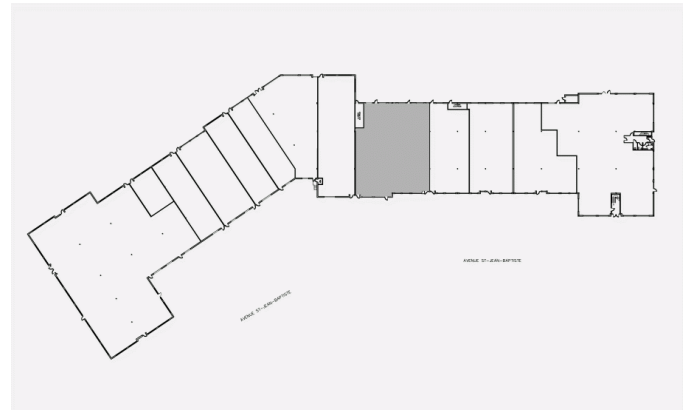
Location Cominar



T 418 681-6300 #2411
E LOCATIONQUEBEC@COMINAR.COM

Space characteristics

NUMBER OF FLOORS	1
HEIGHT	0'
AVAILABLE LEASING AREA: 7,680 FT²	
OFFICES	7,680 ft ²

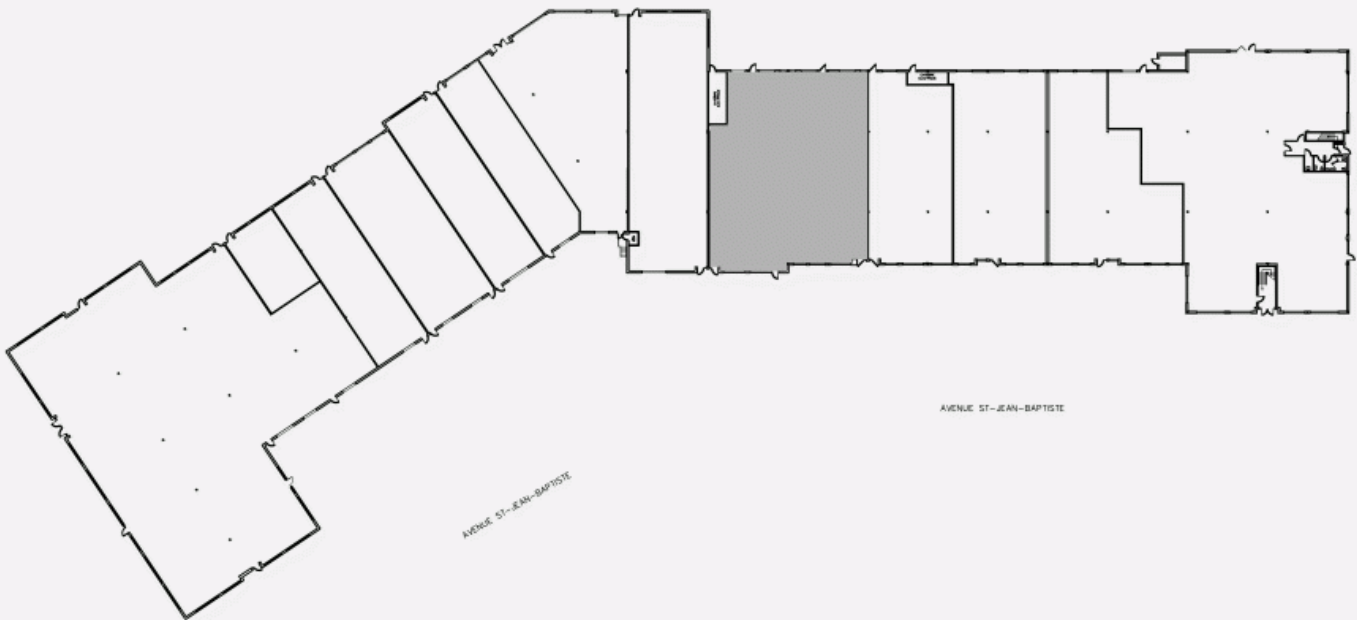


Location Cominar

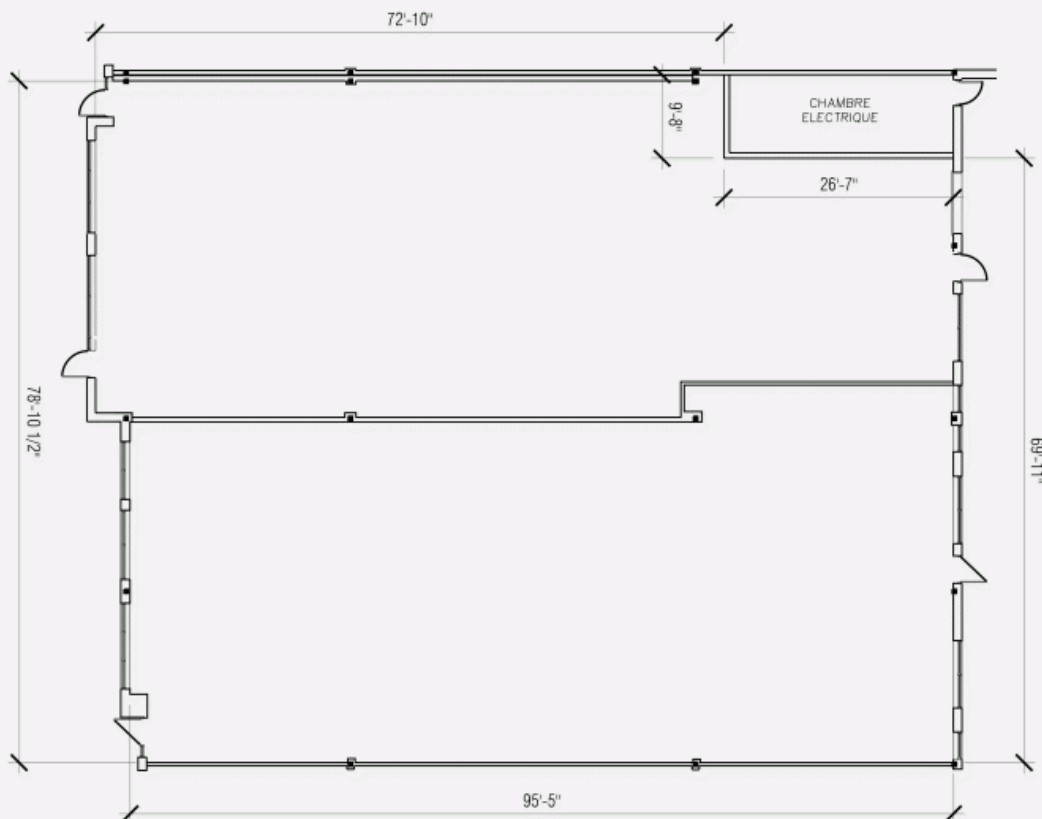


T 418 681-6300 #2411
E LOCATIONQUEBEC@COMINAR.COM

LOCATION PLAN



DEVELOPMENT PLAN





Building image

