

1400 Saint-Jean-Baptiste Avenue, Quebec, QC, G2E 5B7

Suite #135

The building is located in the industrial park Carrefour du Commerce.

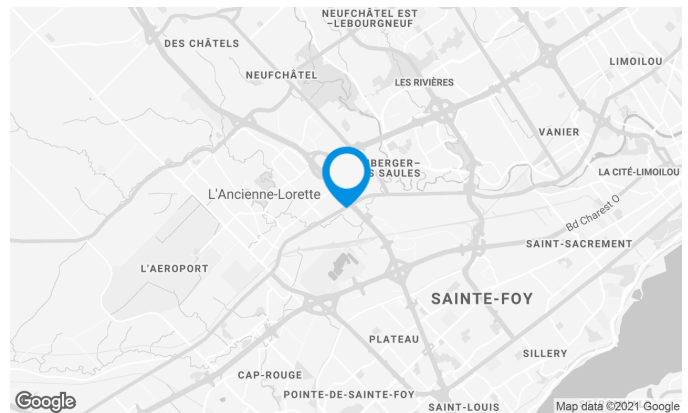
Excellent accessibility and more than 325 outdoor parking spaces.
Restaurants and shops nearby.

Building characteristics

LAND AREA	253,830 ft ²
AVAILABILITY	May 2022
NUMBER OF FLOORS	2
SPRINKLERS	Yes
BUILDING SERVICES	1 Elevator

BUILDING ACCESSIBILITY

PARKING - OUTDOOR	325
ROAD ACCESS	Located next to Henri IV highway and Wilfrid-Hamel boulevard.
BUS	88,380



Location Cominar



T 418 681-6300 #2411
E LOCATIONQUEBEC@COMINAR.COM

Space characteristics

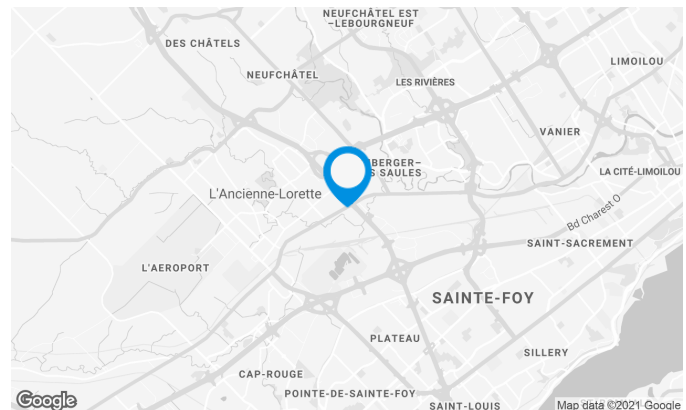
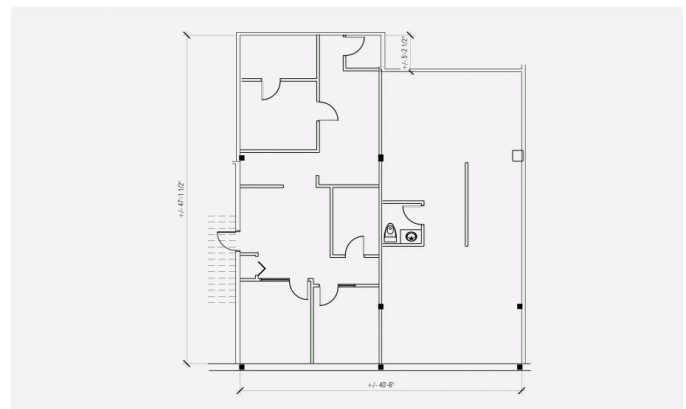
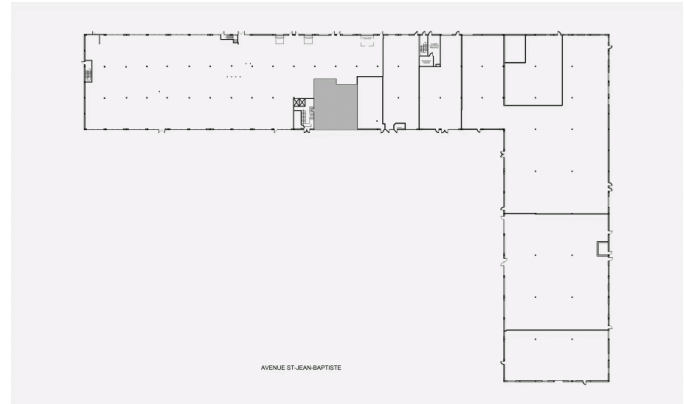
NUMBER OF FLOORS 1

HEIGHT 0'

AVAILABLE LEASING AREA: 1,740 FT²

OFFICES 1,740 ft²

AVAILABILITY May 2022



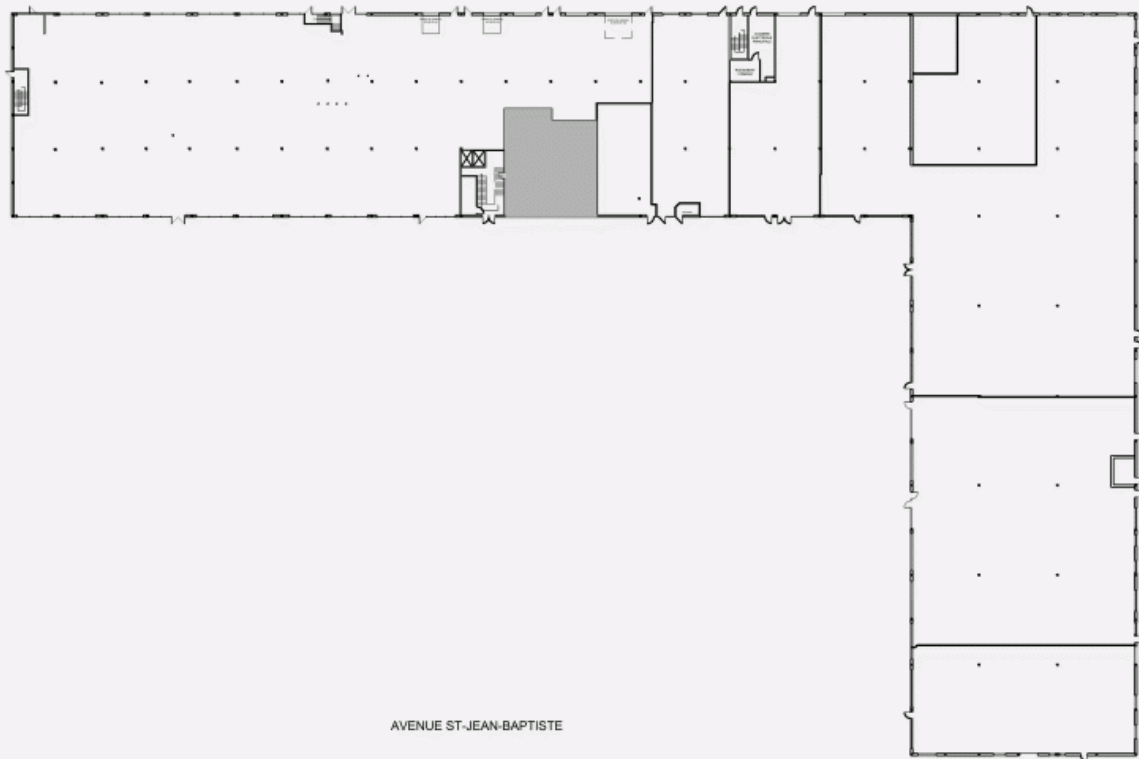
Location Cominar



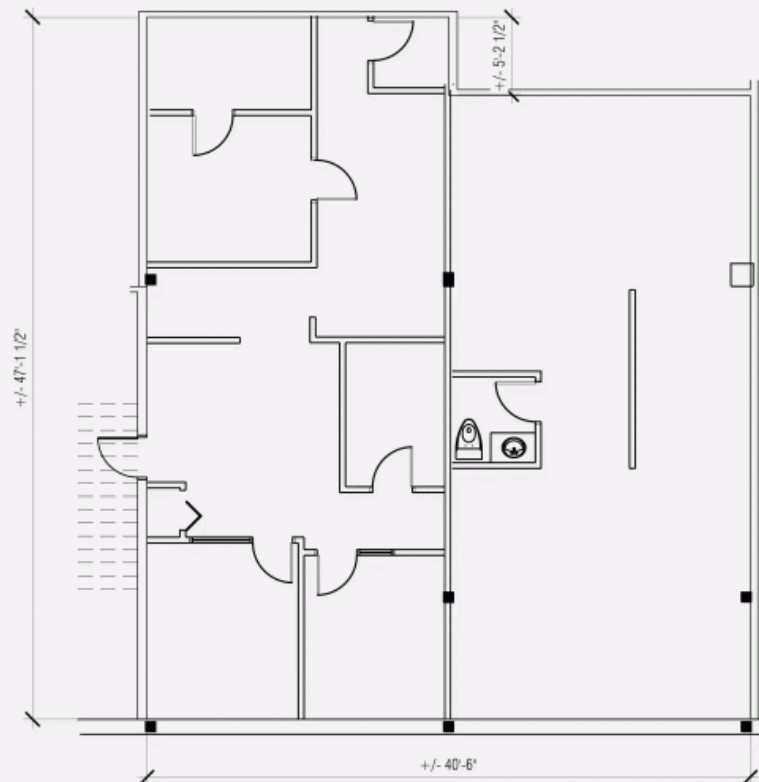
T 418 681-6300 #2411

E LOCATIONQUEBEC@COMINAR.COM

LOCATION PLAN



LAYOUT PLAN



1400 Saint-Jean-Baptiste Avenue, Quebec, QC, G2E 5B7
Suite #135



Building image

