

6360 Chemin de la Côte-de-Liesse, Saint-Laurent, QC, H4T 1E3



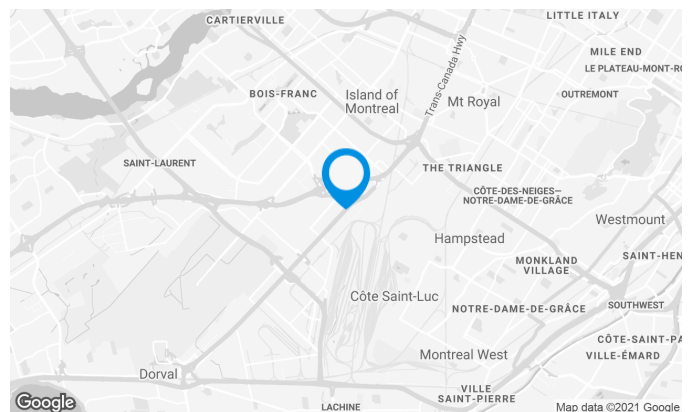
Located near Pierre-Elliott-Trudeau International Airport and the railway and also close to the intersection of Cavendish Boulevard and of Highway 520.

Building characteristics

BUILDING AREA	58,000 ft ²
LAND AREA	253,203 ft ²
YEAR OF CONSTRUCTION	1955
SPRINKLERS	Yes

BUILDING ACCESSIBILITY

PARKING - OUTDOOR	42
BUS	100, 179, 202, 378, 409, 460



Victoria Tenenboym

LEASING DIRECTOR
LEASING - INDUSTRIAL, MONTREAL AREA

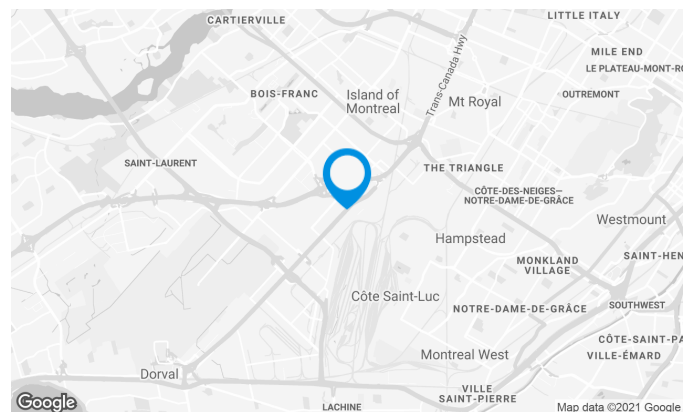
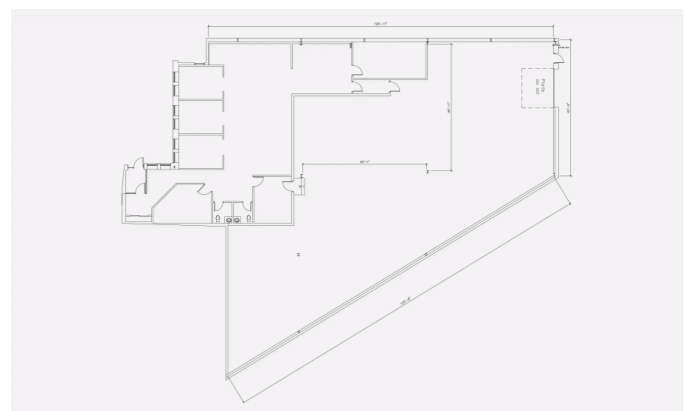
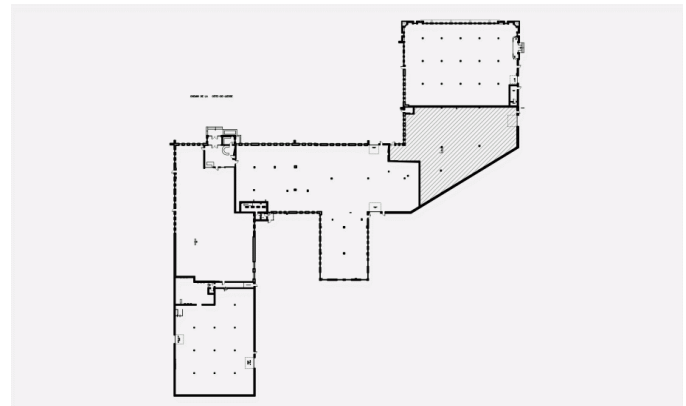
T 514 737-3344 #3218
C 514 894-6505
E VICTORIA.TENENBOYM@COMINAR.COM

Space characteristics

NUMBER OF FLOORS	1
HEIGHT	18'
SHIPPING	1 drive-in
YEAR OF RENOVATION	1999
ADDITIONAL RENT	\$4.47 /ft ²
ELECTRICITY	600 V, 500 A
SPACE BETWEEN THE COLUMNS	25' x 39'

AVAILABLE LEASING AREA: 9,141 FT²

WAREHOUSE	6,037 ft ²
OFFICES	3,104 ft ²
AVAILABILITY	Immediate

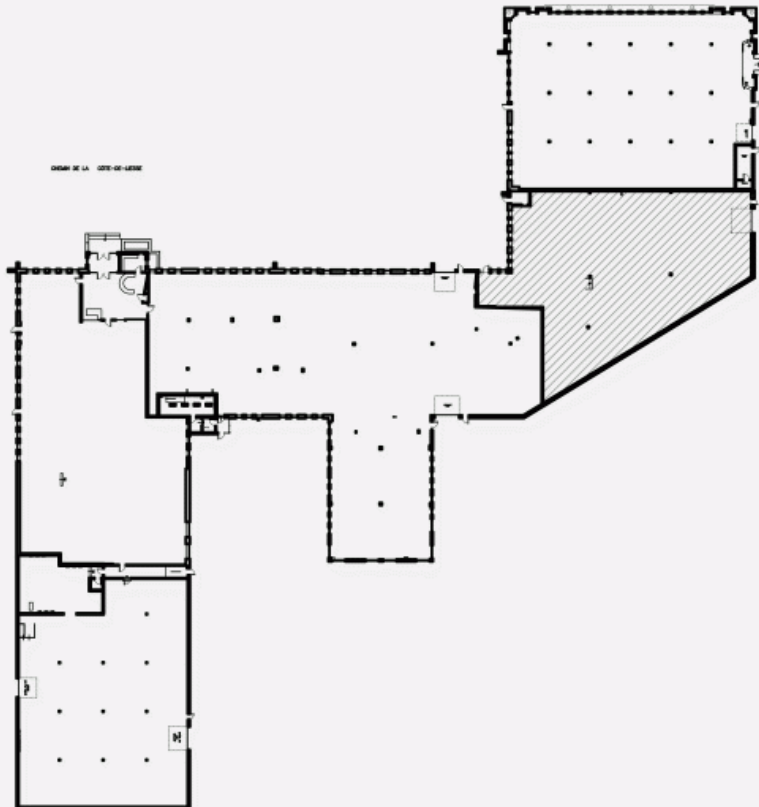


Victoria Tenenboym

LEASING DIRECTOR
LEASING - INDUSTRIAL, MONTREAL AREA

T 514 737-3344 #3218
C 514 894-6505
E VICTORIA.TENENBOYM@COMINAR.COM

LOCATION PLAN



LAYOUT PLAN

