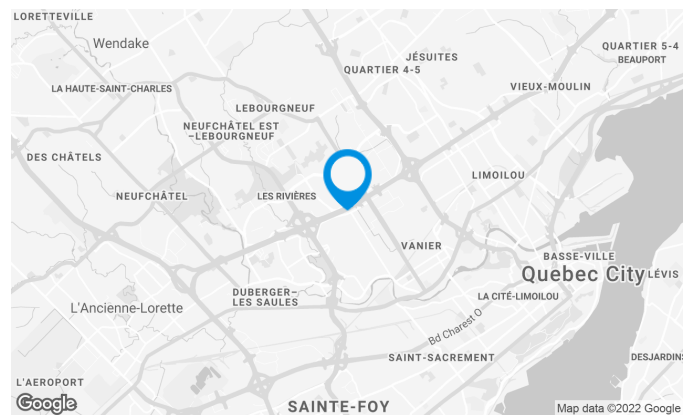


550, Marais street, Quebec, QC, G1M 3R1
Suite #140

Building characteristics

NUMBER OF FLOORS	1
------------------	---



Location Cominar



T 418 681-6300 #2411
E LOCATIONQUEBEC@COMINAR.COM

550, Marais street, Quebec, QC, G1M 3R1
Suite #140

Located in a commercial area at the intersection of Pierre Bertrand Boulevard and Félix Leclerc Highway (Parc Industriel Cardinal). Neighbor of Lebourgneuf district.

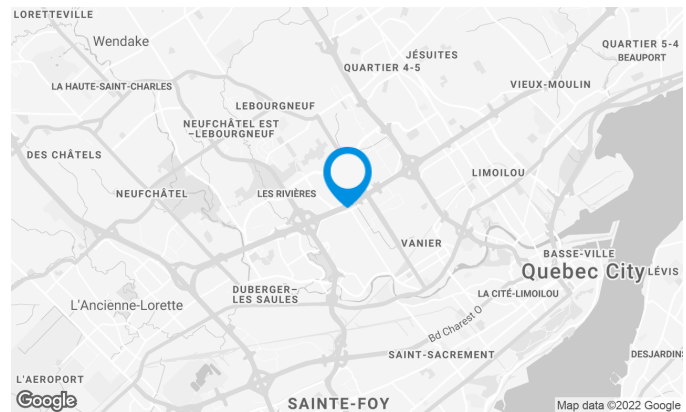
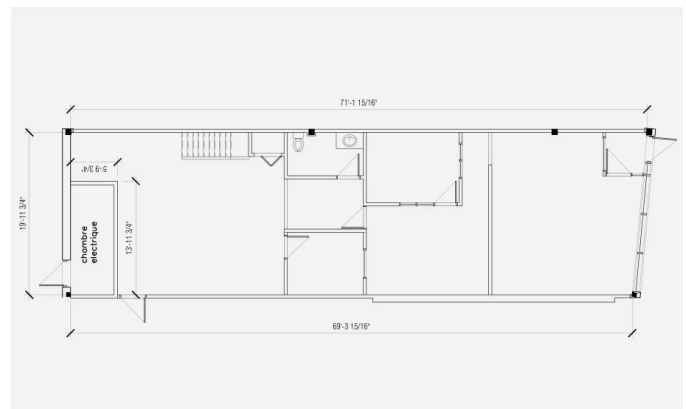
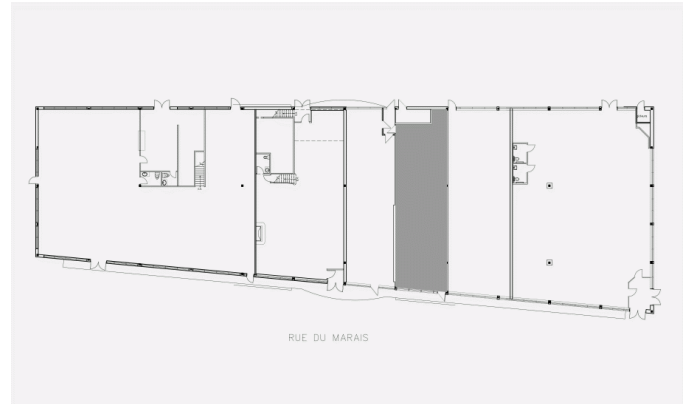
79 free outdoor parking spaces.

Space characteristics

NUMBER OF FLOORS	1
HEIGHT	8'4" - 24'

AVAILABLE LEASING AREA: 1,409 FT²

OFFICES	1,409 ft²
---------	-----------

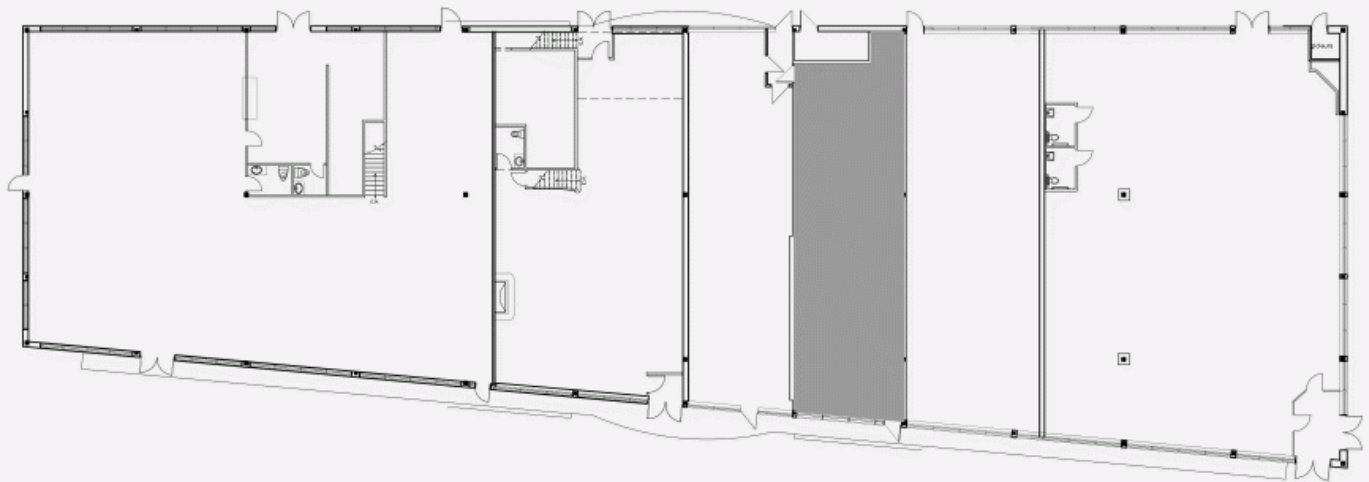


Location Cominar



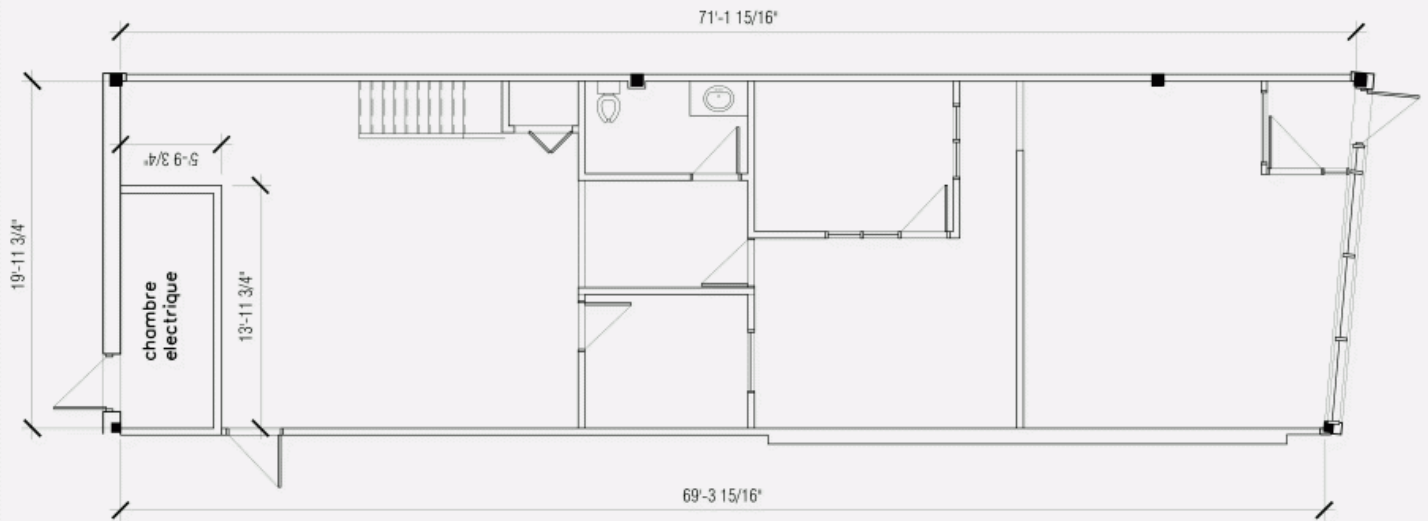
T 418 681-6300 #2411
 E LOCATIONQUEBEC@COMINAR.COM

LOCATION PLAN



RUE DU MARAIS

DEVELOPMENT PLAN





Building Image



Building Image